

DIGITAL LEARNING FROM EXPERIENCE

HOW TO SHARE KNOWLEDGE EASILY IN THE COMPLEX WORLD OF NUCLEAR



PROJECTS IN THE NUCLEAR INDUSTRY ARE:

- Very **LONG** (up to several decades)
- Complex, with stringent **SAFETY CONSTRAINTS**
- Involving many **STAKEHOLDERS**
- Largely a **POLITICAL AND STRATEGIC TOPIC**
- Dependant on local & national **PUBLIC OPINION**
- Very **CAPITAL-INTENSIVE** (financially)



THIS REQUIRES...

TRAINING

TO ENHANCE SKILLS:

- Of a large, growing number of **PEOPLE**
- Over a **LONG PERIOD**
- In **COMPLEX** environments
- By using knowledge from experts with **LIMITED AVAILABILITY**



DOCUMENTARY RESEARCH

TO CONDUCT RESEARCH:

- Using hundreds of **THOUSANDS OF DOCUMENTS**
- Using highly **SPECIFIC VOCABULARY AND TERMS**

WITH THE PROJECT «DIGITAL LEARNING FROM EXPERIENCE»

ASSYSTEM USES ARTIFICIAL INTELLIGENCE TO ENHANCE KNOWLEDGE SHARING

WE PROVIDE RELIABLE, CLEAR, AND CERTIFIED DATA, SUPPORTED BY:



ASSYSTEM'S NEARLY **60 YEARS** OF EXPERIENCE



OPEN ACCESS KNOWLEDGE

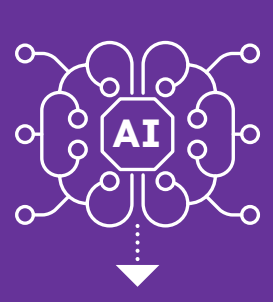
- Voice transcripts from interviews with **ASSYSTEM'S EXPERTS**
- ASSYSTEM'S OWN METHODS AND FRAMEWORK**
- TECHNICAL DOCUMENTS** related to each installation, project, or procedure
- AVAILABLE DOCUMENTS** (400 PhDs, guides from national and international organisms)

THESE ARE INTEGRATED INTO INFORMATION DATABASES, IN STRICT COMPLIANCE WITH SENSIBLE DATA-RELATED REQUIREMENTS

COMMON KNOWLEDGE BASE
accessible to all employees

SPECIFIC KNOWLEDGE BASES
accessible only to authorised persons for specific projects

...THESE ARE CLASSIFIED AND PROCESSED BY GENERATIVE ARTIFICIAL INTELLIGENCE



...SO THIS KNOWLEDGE CAN BE SHARED WITH EMPLOYEES QUICKLY AND CLEARLY

Digital learning

I ANSWER your questions in NATURAL LANGUAGE via a CHAT INTERFACE!



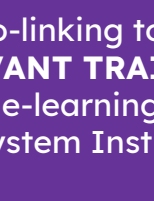
IF YOU NEED FURTHER INFORMATION



EXTRACTION of the relevant methods or appropriate documents



Transfer to a **SPECIALISED EXPERT**



Auto-linking to the **RELEVANT TRAINING** or e-learning in Assystem Institute

- Simple queries:** automatic processing
- More complex queries:** referred to experts

THE «DIGITAL LEARNING FROM EXPERIENCE» APPROACH

OFFERS MANY BENEFITS



FOR THE EMPLOYEES

- Faster FAMILIARISATION** with industry vocabulary and 'jargon'
- Quicker UNDERSTANDING** of large, complex documents
- EASIER ACCESS** to required data



FOR THE WHOLE NUCLEAR SECTOR

- Overall TIME SAVED** on projects
- Greater KNOWLEDGE CAPITALISATION**
- More efficient & quicker SKILL RAMP-UP** FOR TEAMS

IT BECOMES:

- A MODULAR approach**
- A STRATEGIC SOLUTION**
- A way to ATTRACT and RETAIN TALENT**
- A tool that can be INTEGRATED** into existing environments

TO BE INTEGRATED INTO COMPLEX PROJECTS TO SUPPORT:

- A TEAM**
- A PROJECT**
- A DESIGN OFFICE**
- THE NUCLEAR SECTOR**

SWITCH ON

ENGINEERING & DIGITAL FOR ENERGY TRANSITION